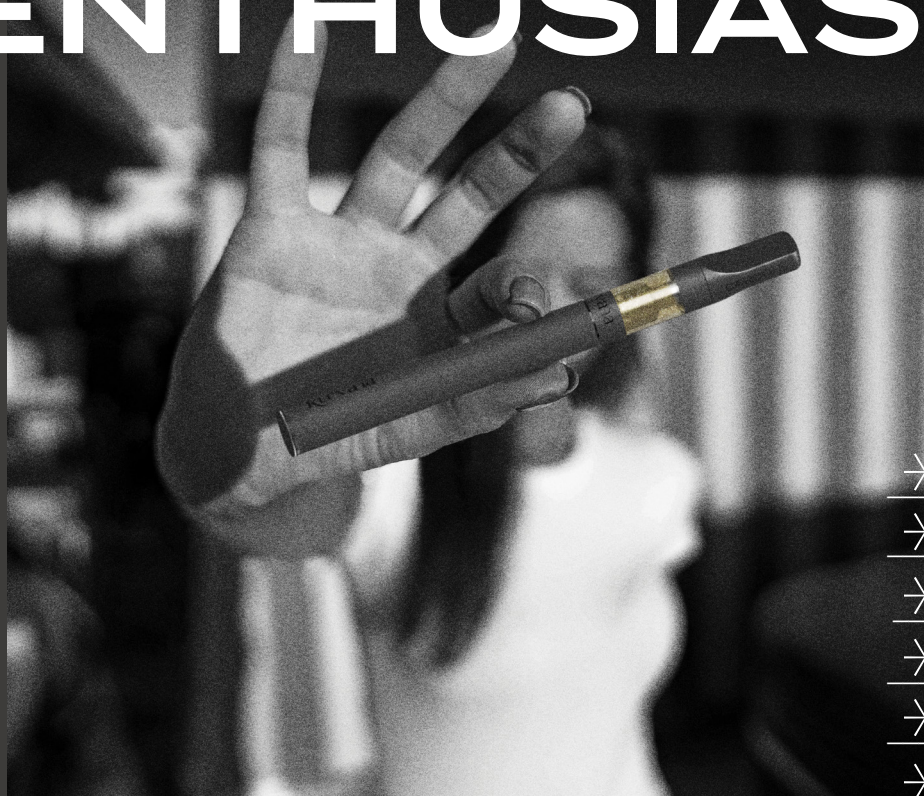


CARBON₂₁





FOR THE CONCENTRATE ENTHUSIAST.



- */ LIVE RESIN
- */ DIAMONDS
- */ BADDER
- */ SAUCE
- */ ROSIN
- */ HTFSE
- */ HASH
- */ WAX

TABLE
OF
CONTENTS

•	04
•	05
•	06
•	08
•	09
•	10

INTRODUCTION

RAW CONCENTRATES

CURATED PROCESS

A DAB EXPERIENCE

DELIVERY SYSTEM FEATURES

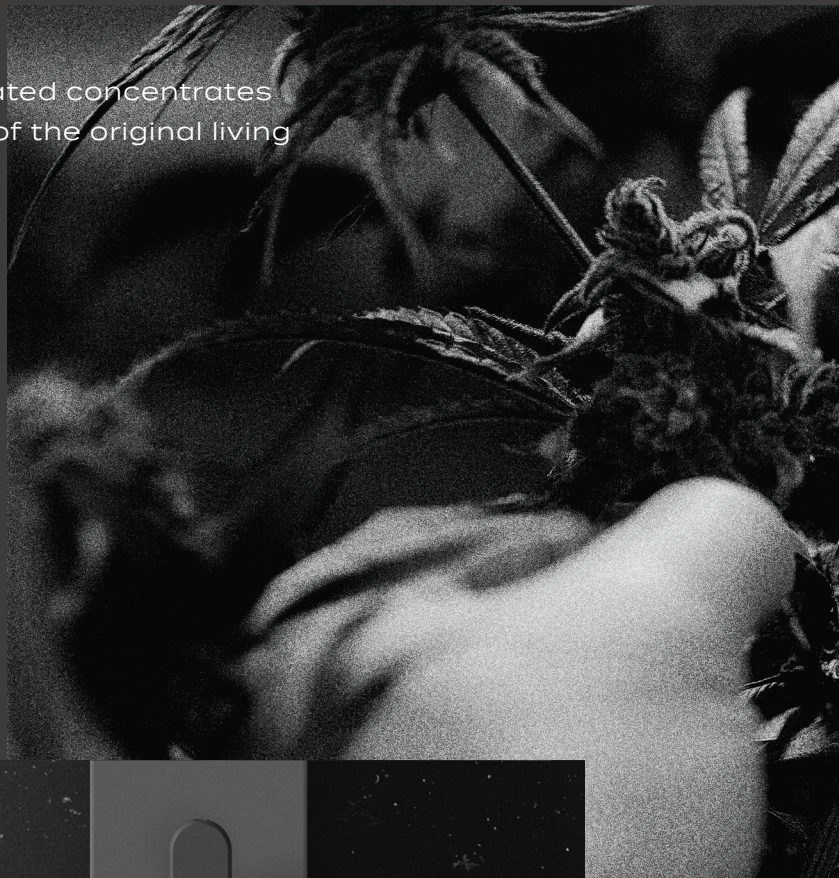
SPRING 2022 COLLECTION



INTRODUCTION _____ Expertly curated concentrates that celebrate the rich complexity of the original living cannabis plant.

CARBON₂₁ is our pinnacle vape line, consisting of carefully curated raw concentrates in our latest hardware. We pair our proprietary live-plant curation with a unique extraction method for each strain in this line. Deliberately crafted in small batches, each strain is presented in its rawest concentrate form—rich with the cannabinoid, flavonoid and terpene complexities of the live cannabis plant. An experience most similar to dabbing your favorite concentrates.

CARBON₂₁ is the quintessential, artisanal vape experience.





RAW CONCENTRATES _____ Each plant is meticulously harvested using a method specific to its genetics, resulting in a pinnacle extract with unmatched aroma and taste.

It starts at the aromatic epicenters of our California grows, where passionate cultivators meticulously hand-harvest each plant at the exact moment of optimum terpene and flavonoids levels. Without a moment to lose, the selections are immediately pressed and extracted or cryogenically frozen - effectively capturing and preserving the full body potency, aroma, and taste that Kurvana is known for. Throughout the process, we go to great lengths to minimize all air, heat, and light exposure to the concentrate in order to preserve its raw flavor and taste. The result is an unforgettably pungent, virgin concentrate with a robust range full of cannabinoids, terpenes, and flavonoids.



CURATED GENETICS

CARBON₂₁ - starting with the best genetics, our plants are bred to be experienced as concentrates. However, it takes more than top shelf flower to make the best concentrates. Our genetics are carefully chosen based on the distinct, naturally produced phytochemical profiles within the plant's glandular trichomes.



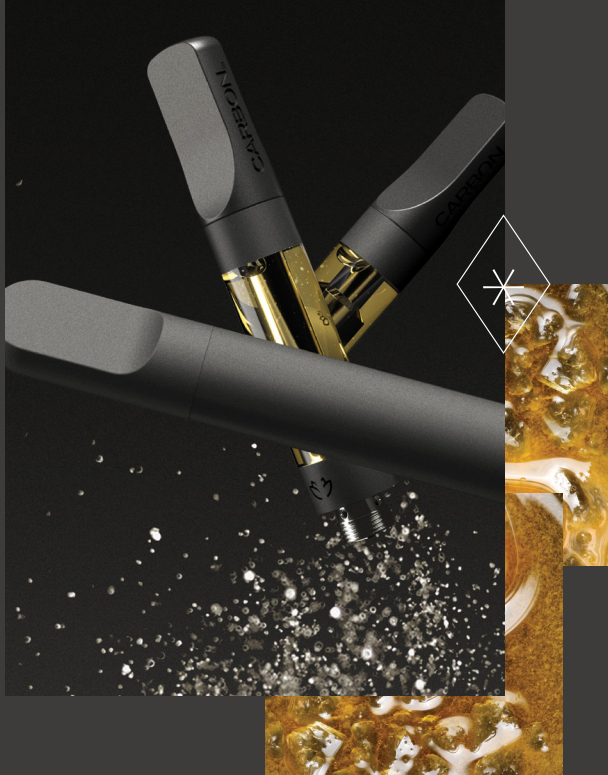
PRODUCTION

In a single run, our expert team employs various extraction methodologies to harvest the essential cannabinoids, terpenes, and flavonoids. Our meticulous production methods collect more natural terpenes than most other solvent extractions, leaving an unforgettable taste and true full-spectrum effects.

FILLING AND STORING

As we continue down the manufacturing process, our concentrates are always stored at cool temperatures, in low light conditions, and inside specialty airtight glass jars. Any exposure outside of these parameters can lead to unwanted degradation. Each completed batch is refrigerated until delivered to retailers. Furthermore, our latest delivery system is sealed airtight and the packaging reduces light exposure.



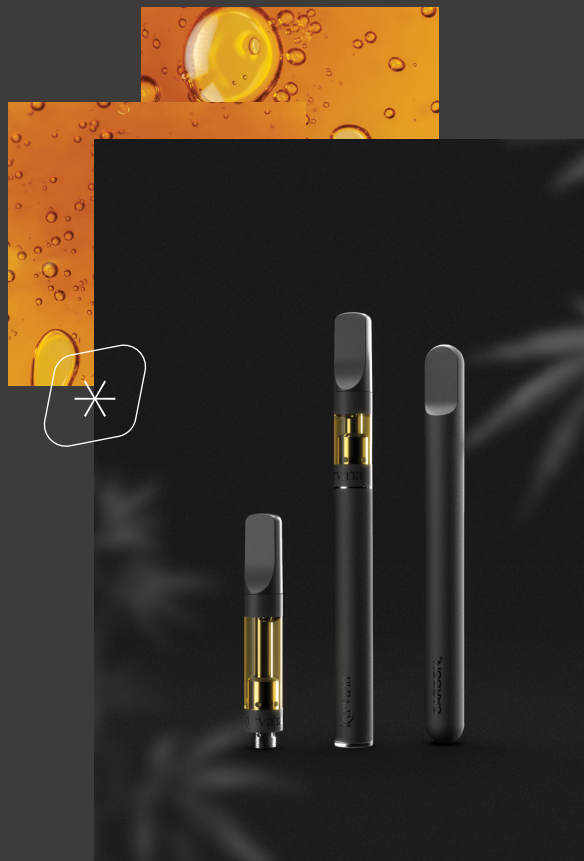


CARBON₂₁ SAUCE

CARBON₂₁ Sauce is one of many extraction methods we use to produce a concentrate with high levels of terpenes and incredibly robust flavor profiles. The concentrated batches are curated by employing sub-zero temperatures and strain-dependent techniques to help control the consistency and viscosity throughout the extraction process, allowing cannabinoid compounds to crystallize. The result is a high terpene and cannabinoid sauce concentrate ready to be enjoyed without dabbing hardware.

CARBON₂₁ DIAMONDS

Diamonds are the crystalline structures that develop in sauce, a cannabis concentrate with high levels of terpenes and a glossy runny texture. Concentrated by using a closed-loop system that allows the resulting solution to settle under various pressures and temperatures. This environment promotes the natural separation of the major cannabinoids, including THCa in the form of diamonds resulting in a terpene-rich, liquid with THCa diamonds.





A DAB EXPERIENCE _____ Breakthrough vaporizer technology offers a full unlocked taste that reveals the robust range of a full-spectrum concentrate.



To help you experience the true essence of our carefully Curated Concentrates, the unrivaled draws of our **CARBON₂₁**'s breakthrough vaporizer offers full-bodied tastes that reveal the robust range of a full-spectrum extract. Our newly updated CTEC 2.0 heating element provides 360° oil contact for clean, consistent vaporization down to the last draw. The embedded coil design generates ideal temperatures that preserves both flavor and cannabinoid profiles – all while providing minimal air exposure to the concentrate.





A DAB EXPERIENCE

A complete flavor and effect experience without the complexity of a torch, rig, or complicated setup

ERGONOMIC ALUMINUM MOUTHPIECE

Lightweight, medical-grade and anodized aluminum mouthpiece designed for comfort

FOOD GRADE MATERIALS

From high quality stainless steel to our BPA-free tank, we kept safety and contamination in mind

STAYS FRESHER LONGER

Our housing tank reduces natural oil oxidation that keeps it fresher longer

CTEC 2.0 HEATING ELEMENT

Premium ceramic heating element composition and material refinement

PRECISE CONCENTRATE VAPORIZATION

Precise pore sizes for optimal concentrate vaporization and dose control

SPRING 2022 COLLECTION →

Do-Si-Dos Sauce

OG Kush Breath × Face Off OG

Indica | Pungent, Sweet, Earthy

This pungent pairing is comprised of its classic OG genetics, which offers a potent yet smooth onset, leaving you in dreamy, euphoric bliss.

Total Cannabinoids
90.32%

Total THC	Total THCa	Total CBD
84.07%	14.37%	0.43%

Primary Terpenes

- Beta-Caryophyllene
- Limonene
- Beta-Myrcene
- Linalool
- Alpha-Humulene

Lemon Walker Diamonds

Lemon Skunk × Skywalker OG

Indica | Citrus, Pungent, Pine

A deliciously crisp OG pairing of its pungent genetics offer a quick, onset of relaxation.

Total Cannabinoids
83.35%

Total THC	Total THCa	Total CBD
78.83%	12.85%	0.34%

Primary Terpenes

- Beta-Caryophyllene
- Alpha-Humulene
- Limonene
- Alpha-Bisabolol
- Linalool

Blackjack Diamonds

Black Domina × Jack Herer

Hybrid | Earthy, Pine, Sweet

Heavy earthy tones translate to a sweet, piney escape, leaving you in a blissful, clear-headed mindset.

Total Cannabinoids
88.52%

Total THC	Total THCa	Total CBD
83.38%	4.73%	0.20%

Primary Terpenes

- Terpinolene
- Beta-Caryophyllene
- Ocimene
- Limonene
- Beta-Myrcene

Gelato Sundae Sauce

Gelato #33 × Sundae Driver

Hybrid | Earthy, Fruity, Citrus

True to its legendary genetics, this earthy and sweet citrus pairing offers a relaxing and euphoric effect.

Total Cannabinoids
92.83%

Total THC	Total THCa	Total CBD
87.31%	11.24%	0.29%

Primary Terpenes

- Beta-Caryophyllene
- Limonene
- Beta-Myrcene
- Linalool
- Alpha-Bisabolol

Chocolope Sauce



Chocolate Thai × Cannalope Haze

Sativa | Earthy, Sweet, Chocolate

Indulge yourself with this irresistible combination of rich chocolate and sweet earthy notes for a balanced, euphoric and uplifting mental shift.

Total Cannabinoids
90.95%

Total THC	Total THCa	Total CBD
85.29%	8.12%	0.20%

Primary Terpenes

- Limonene
- Beta-Caryophyllene
- Linalool
- Alpha-Humulene
- Beta-Myrcene

Lemon Royale Sauce

Lemon Tree × GMO

Sativa | Lemon, Earthy, Herbal

As bold lemon notes burst through a grassy euphoria, stimulating effects will uplift your state of mind.

Total Cannabinoids
88.54%

Total THC	Total THCa	Total CBD
82.43%	12.17%	0.52%

Primary Terpenes

- Beta-Myrcene
- Beta-Caryophyllene
- Alpha-Humulene
- Limonene
- Alpha-Bisabolol

Contents should be stored in a temp-controlled environment between 35°-55°F to maintain optimum freshness.

CARBON21 strains will vary as each collection is curated and released based on the exclusive genetics we have available, providing new and unique tastes and aromas for you to experience.

*Potencies vary by batch.

kurvana®

CURATED CONCENTRATES



CURATED CONCENTRATES



CURATED CONCENTRATES